



HO'OLA NĀ PUA

Impact Report 2018

# *Connectivity*





## LETTER FROM THE PRESIDENT

As we reflect on 2018, we are so honored to be engaged in this important work of service to children and community. The mission, vision, programming, advocacy, and tremendous growth would not be possible without your continued support. Contributions through generous donations of time, talent, and treasure have helped to drive the momentum and impact that we celebrate within this service space. As I look at our programming initiatives, we have been intentional through each step of design and implementation. Everything HNP has chosen to engage in has a common thread: **connectivity**. As we work to drive change in ending exploitation, each layer of programming, advocacy, and education is connected.

Prevention, intervention, healing, and reintegration are all connected and needed for bringing systemic changes that are absolutely essential—they need one another to bring about the lasting and sustainable change HNP is committed to. They also play a significant part of tailoring the response system. Exploitation has a direct impact on the public health of our community. If this problem goes unaddressed, the societal costs will continue to increase and the health of our children and families will decline. As our programming efforts are interwoven with our collaborative partnerships, the

continuum of care grows so that children and their families have access to vital services and support. Each programmatic and community advocacy component is survivor-informed.

We are committed to quality care based on best practices and also recognize there is an element of pioneering as this service sector continues to develop across this country and around the globe. As you continue to walk this journey with us, your connection to what we do is changing lives, the community, and bettering the long term health of those we serve. The more connected we are, the greater the impact and our ability to decrease shame and stigma around this issue. We thank you and let's celebrate what has been accomplished in 2018 together as we continue to shine the light into the darkness!

Mahalo Nui Loa,

Jessica R Munoz  
MSN, APRN-RX, FNP-BC



# WHO WE ARE



**Ho'ōla Nā Pua (HNP) is committed to the prevention of child sex trafficking and caring for children who have been sexually exploited.**

Sex trafficking exists nationwide: in cities, suburbs, and rural towns, including throughout our communities here in Hawai'i. Sex trafficking of children is any sex act or sexual abuse involving a minor in which something of value is given to or received by any person. Children can be exploited at any age, regardless of race, gender, or nationality. They may come from a variety of backgrounds and vulnerabilities. We work to prevent exploitation by educating and empowering children at school, and we provide mentoring opportunities in a variety of settings for healthy relationship building that brings healing to children who have experienced severe trauma. We are also committed to building a quality comprehensive residential treatment program to bring health and healing.

Ho'ōla Nā Pua **HEARS** children and their families, providing services through **H**ealth, **E**ducation, **A**dvocacy, and **R**eintegration to those most vulnerable. The problem of sex trafficking requires all of us, our entire community, to connect and surround our keiki with comprehensive support. We certainly can't do it alone, and we are proud of the connections made and partnerships forged this year which continue to expand the safety net necessary for these children.



# HEALTH



Ho'ōla Nā Pua's Starfish Mentoring Program provides trauma-informed care through comprehensive, one to one mentoring that addresses the unique needs of survivors of sex trafficking and those at risk. Mentors offer support and advocacy while serving as positive role models to program participants, ages 11-21. Mentors and mentees meet for two hours a week, every week, for one year. Our mentoring program ensures that mentees connect with a caring adult to help guide them toward healing, restoration, and successful social reintegration.



*I loved every minute of the activity, and I learned that we all have gifts that shape our personality.*

- Hoku Group Participant



Our Hoku program grew in 2018 from three facilities to five, reaching more youth.

Hoku is a program that provides weekly group activities in youth residential facilities. Based on a resilience framework, staff and volunteers conduct lessons and activities that aim to model healthy connections and promote self-empowerment. These factors are paramount in the recovery of trauma survivors. Youth in these facilities often have multiple risk factors and vulnerabilities, and many have been identified as victims of exploitation. The fact that

they are in residential care often means that they are system-involved through Child Welfare and/or Juvenile Justice. System involvement is, in itself a commercial sexual exploitation risk factor for youth due to the circumstances that led them there.

Hoku lessons and activities are designed to be fun and engaging, and always start with making connections. We focus on resiliency-building areas of self-worth, knowledge, social and safety skills, and purpose. Our goal is to equip youth with empowerment tools that will serve as protective factors when they are discharged.



## HOKU PROGRAM

**93** youth received group mentoring  
across 5 facilities, 2 islands



**57%** of Native Hawaiian decent

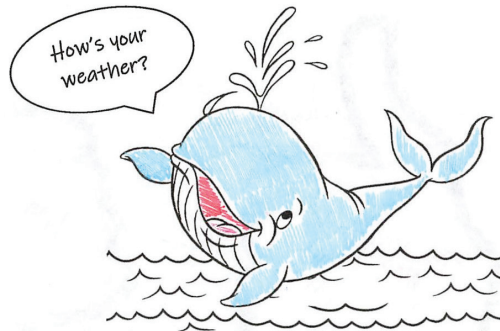


## STARFISH MENTORING PROGRAM

**11** received individual mentoring



**64%** of Native Hawaiian decent



My weather Report is...

Sunny with drizzle



Where did your weather  
hop to?

Sunny

### YOUTH ACHIEVEMENTS

- Returned to safe homes
- Re-entered school
- Graduated from high school
- Obtained a cosmetology license
- Achieved independent living
- Built safe support systems
- Learned to recognize healthy relationships and safe boundaries
- Become healthier with collaborative support

In our Hoku Program, participants give a 'weather report' on their mood. This participant experienced a positive change in her mood after participating.



# PREVENTION EDUCATION



Our education program helps prevent victimization by teaching our keiki to recognize the warning signs of exploitation and empowering them with resources to connect them with trusted adults and to know what to do. The presentations are available for students from middle school through high school to inform them about the issue, raise awareness, and provide measures that students can internalize to keep themselves and their peers safe.

**Connecting** with providers who are often the first responders, who have the opportunity to identify exploitation, is another arm of our education program. Social workers, health care personnel, educators, and administrators have received training from HNP staff and from national experts who have come to Hawai'i through our partnership.

“

*Thank you so much for your presentation and for bringing a new light to the situation. With this information, I feel like I might be able to make a difference or change someone's life. It gives me confidence and relief knowing that now I may be able to make a change, as well as knowing that there is someone out there bringing awareness and trying to make a difference. Looking back, and now knowing the signs, I realize that I could have possibly been one of the many faces and many stories out there.*

- A., Student, Campbell HS

”

## YOUTH FEEDBACK

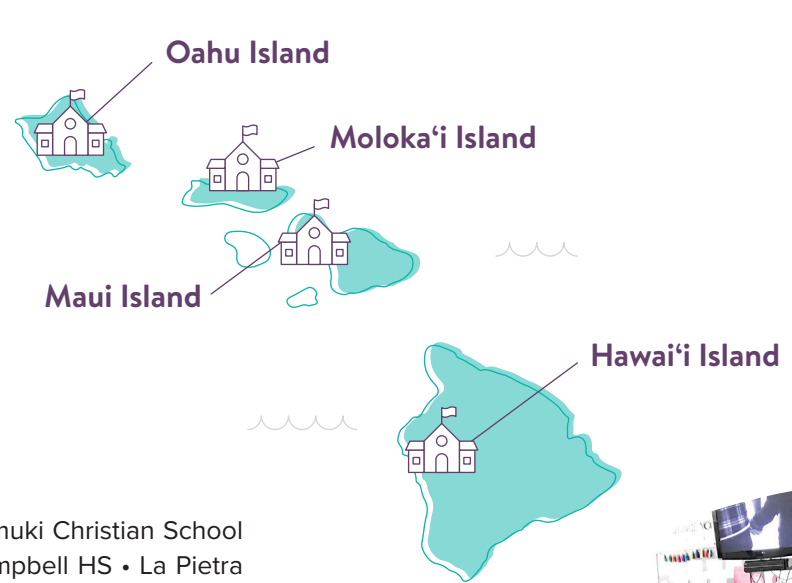
- 75% received education on commercial sexual exploitation for the first time
- 96% are confident that they can recognize warning signs of a trafficking situation
- 98% know who to contact for help
- One of the largest takeaways: Cyber safety is important in an age where we connect so easily
- Nearly 1 in 5 kids said they will practice more cybersafety

# MAP OF SCHOOLS REACHED IN 2018

**3,947** students reached  
across 4 islands



**1,603** professionals trained



## SCHOOLS REACHED:

Kaimuki HS • Kamehameha MS & HS • Saint Louis MS & HS • Kaimuki Christian School  
Calvary Chapel MS & Elementary • Sacred Hearts Academy • Campbell HS • La Pietra  
Pearl City HS • Punahou School • Nanakuli MS & HS • Halau Ku Mana Public Charter  
School • Leilehua HS • Wahiawa MS • Waianae MS • Kapiolani Community College  
Hawai'i Pacific University • Hawai'i Technology Academy Kona • Lahainaluna HS • UH  
Hilo • Kalaheo HS • Dole MS • Moloka'i MS • Mililani HS • Washington MS • Radford HS  
Argosy University • UH Nursing School • Chaminade University

## PROVIDERS TRAINED:

Liliuokalani Trust • Catholic Charities • Child and Family Behavioral Health Services  
CAMHD • Hawai'i Youth Services Network • Hina Mauka • Hawai'i Youth Correctional  
Facility • HiEHIE • Wahiawa General • Hawai'i Athletic Trainers Association • Kahuku  
Medical Center • Windward District Social Workers • WCCHC • Youth Challenge Academy  
Noho Olu Salvation Army Safehouse • Hawai'i Island Coalition Against Human Trafficking  
• Keiki Coalition • Family Court • Military (Ft. Shafter, Schofield) • HUI Coalition

*This is a comprehensive list of ongoing partners.*





# ADVOCACY & COMMUNITY OUTREACH

## NATIONAL LEGISLATIVE REPORT CARD FOR HAWAII



For legislation that allows a fresh start for survivors



For legislation addressing commercial sexual exploitation in the criminal justice system

### Proposed legislation that would have raised our grade (but was not passed):

**HB 2138:** Add solicitation of a minor for prostitution to offense of sex trafficking, remove statute of limitations for prosecution of sex trafficking/solicitation of a minor for prostitution, increase penalties for offenders of sex trafficking

**HB 125:** Allow DHS to contract with a provider to operate a sex trafficking special treatment facility for minors

**HB 949:** Allow DOE to conduct voluntary training on sex trafficking prevention to teachers/staff

**HB 930:** Create a task force to review curricula to educate public school students about sexual abuse/sex trafficking prevention

**SB 2275:** Require health care, law enforcement, and social workers to report suspected labor/sex trafficking cases

### According to a January 2019 study on youth sex trafficked in Hawaii, conducted by the ASU School of Social Work:



HNP is committed to connecting the dots between the lives of our keiki and the community structure vital to keeping them safe. We continue to solicit testimony from our supporters for needed legislation and to partner with organizations doing research to shine a light on this issue.

We assisted with the development of innovative and first-of-their-kind research studies conducted by the Arizona State University Office of Sex Trafficking Intervention Research and the Hawai'i State Commission on the Status of Women discussing demand for commercial sexual exploitation of children in Hawai'i and stories of survivors.



[Sex Trafficking in Hawai'i Part 1: Exploring Online Sex Buyers](#)



[Sex Trafficking in Hawai'i Part 2: The Story of Survivors](#)



## National Human Trafficking Awareness Day



By Presidential Proclamation, January is National Slavery and Human Trafficking Prevention Month. On January 11, 2018, HNP held an awareness walk on the State Capitol Ground in Honolulu to bring awareness to the community on this national and local issue.



## Good Deeds Day & Make a Difference Day



**6,954** volunteer hours 

## Advocacy Awardees



The Ho'ōla Nā Pua Advocacy Award recognizes individuals and entities who have joined the fight against sexual exploitation by taking a courageous public stand on behalf of vulnerable children in Hawai'i. The 2018 recipients are pictured here with our President, Jessica Munoz (pictured left to right): Mark Miriam representing Rotary District 5000, Winton Schoneman, Mary Burgess representing Sutter Health - Kahi Mohala, Karen Tan representing Child & Family Service, Jan Vasilius and Ann Charles representing The Kaimas Foundation, Council Member Kymberly Pine, and Julie Hong, Robert Lietzke, and Dennis Gibson representing Booz Allen Hamilton. Recipients not pictured: Dr. Dominique Roe-Sepowitz, and U.S. Congresswoman Tulsi Gabbard.



## PEARL HAVEN

The Pearl Haven Campus will be a trauma-informed, licensed, and accredited treatment campus. Pearl Haven will provide a residential program for young females age 11-18 who have been sexually exploited. The program will focus on health and well-being by integrating group and individual therapies, mental and physical care, educational needs, and family reunification.

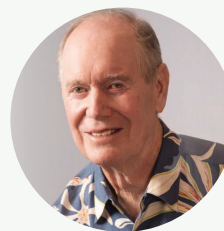
Children who have been exploited suffer from severe complex trauma. Given their level of victimization, intensive intervention and comprehensive therapeutic services need to be provided in a safe environment. Our vision is to provide girls who are rescued or escape from the abuse of sexual exploitation with services, a path to restoration and healing from their trauma, an increased sense of self-worth, and the confidence and ability to successfully reintegrate into the community. The facility will provide a much needed element in the continuum of care offered to children experiencing high levels of trauma.

“

*I believe strongly in the Pearl Haven Project... Pearl Haven is a sustainable project that's critical for the girls of Hawai'i.*

- John Dean,  
Board Member,  
Central Pacific Bank

“



*The MacNaughton Foundation is honored to be supporting HNP and its much needed Pearl Haven project. Our community is closely connected and interwoven and we look forward to helping HNP connect with caring businesses and individuals to see this project through. Each additional person and company that sees the need for Pearl Haven, and joins the mission, makes the impact of HNP stronger and more impactful. We need to rise as a community to right this wrong.*

- Duncan McNaughton,  
Chairman & Founder, The McNaughton Group

## 2018 STATUS

Total project budget: **\$9 MILLION**



**Phase 1 \$1.3 MILLION**  
Site Development & Campus Design

**Phase 2 \$0.6 MILLION**  
Mobilization & Demolition

**Phase 3 \$1.0 MILLION**  
Dry-in

**Phase 4 \$2.6 MILLION**  
Structure, Partition & Rough

**Phase 5 \$2.2 MILLION**  
General Finishes

**Phase 6 \$1.3 MILLION**  
Commercial Kitchen, Laundry, Furniture, Fixture,  
Equipment, Landscaping, Exterior Gate, and Sidewalks



“

*Pearl Haven is a labor of love. It is passion that drives us to design and build a truly sustainable and healing environment. As architects, we put ourselves in the shoes of those who we are building for. It is unfathomable what these girls have endured and for our team, it has been truly gratifying to design a safe sanctuary of healing and hope devoted to Ho'ōla Nā Pua's mission.*

- Bettina Mehnert, President & CEO, AHL

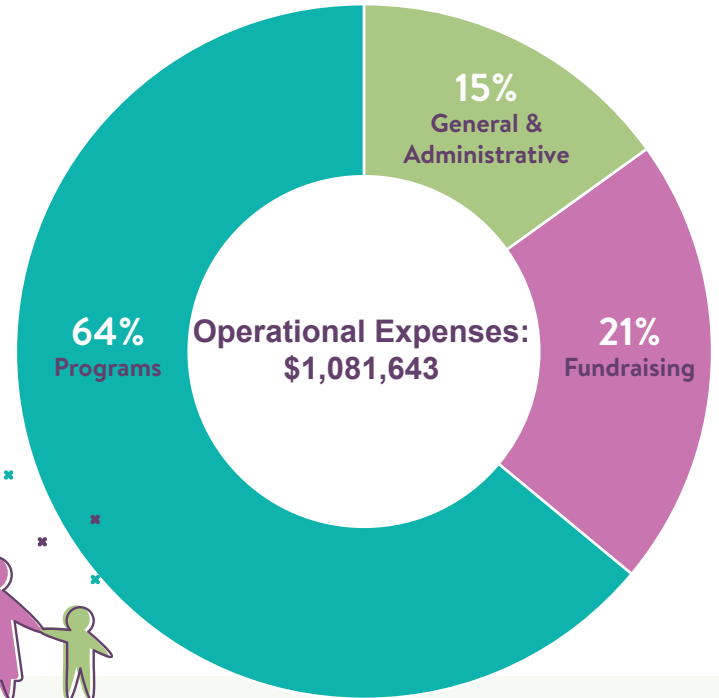
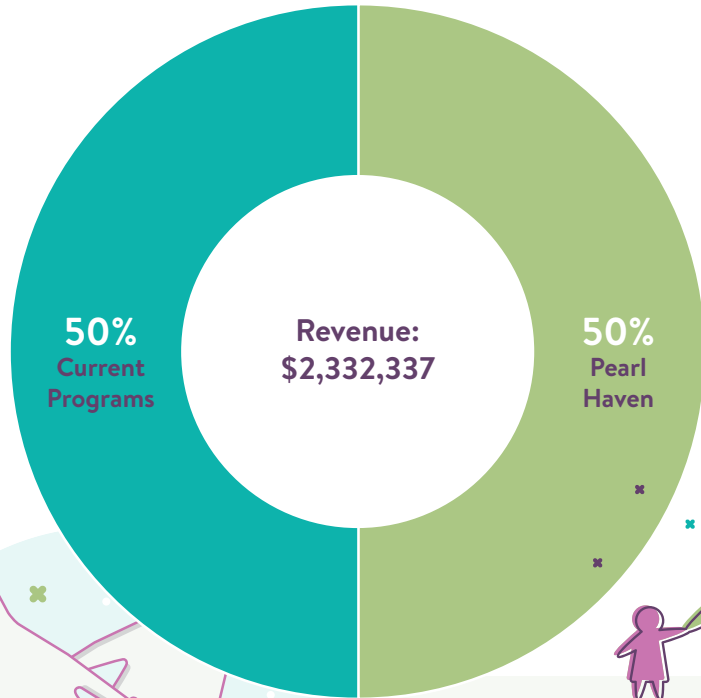
”







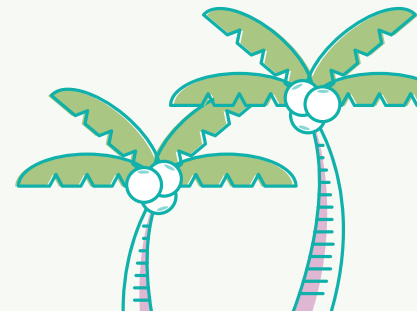
# FINANCIALS 2018



## TOTAL NET ASSETS

12/31/17 \$1.6 million

12/31/18 \$3.1 million





# MAHALO TO OUR SUPPORTERS AND SUSTAINING DONORS 2018

## \$100,000+

State of Hawaii Office of  
Community Services  
State of Hawaii Department of  
Labor and Industrial Relations  
Lil'oukalanui Trust  
Zilber Family Foundation  
The MacNaughton Group  
Foundation

## \$50,000-\$99,000

Anonymous  
Consuelo Zobel Alger Foundation  
Hawaii Women's Legal Foundation  
John & Sue Dean  
The Robbins Foundation

## \$25,000 - \$49,000

Daniel Dranove  
Diana Phillips  
Hayashi Family Foundation  
Leif & Roberta Johansen  
Linda Nakagawa  
Sousa Family Trust  
The Gift Foundation of Hawaii  
The Rose Fund

## \$1,000 - \$24,000

7-Eleven Hawaii, Inc  
A.A. Windesheim Charitable  
Foundation Inc.  
Alan MacPhee  
Alexander & Baldwin  
Aloha Care  
Ann Charles  
Anonymous  
Anthony Vericella  
Architects Hawaii Ltd.  
Ariel Taumuli  
Bank of Hawaii  
Barron Guss  
Bill Matar  
Blacksand Capital, LLC DBA Black  
Sand Capital  
Bobby Lou & Stan Yeackel  
Booz Allen Hamilton  
Brittany Uhl  
Bryan Spicer  
Caitlin Caldwell  
Carol Taira  
Carole Lee  
Carrie & Sterling Martell  
Central Pacific Bank

Central Pacific Bank Foundation  
Central Union Church  
Central Union Church of Honolulu  
Women's League Ministry  
Child and Family Service  
Christine Aron  
Christopher Ballard  
Conrad Colbert  
Corepower Yoga  
Dan & Terri Pierson  
Dana Shaffer  
Danae Khan Jones  
Dean & Tara Spagnoli  
Diane Von Furstenberg Studio, LLC  
Dorothy & John Naton  
Dorvin D. Leis Co., Inc.  
Douglas & Elizabeth Brown  
Dr. Angela Pratt  
Dr. Dominic Bagnoli  
Elizabeth Rice Grossman  
Ellyn Sollars  
Felita Shen  
First Hawaiian Bank  
Frances Nuar  
Friends of Hawaii Charities  
German Benevolent Society of  
Honolulu Charitable Fund  
Gwynn Elliott  
Hawaii Community Foundation  
Hawaii Dialogix Telecom, LLC  
Hawaii Gas Co.  
Hawaii Lodging & Tourism  
Association  
Hawaii Pacific Health  
Hawaii State Bar Foundation  
Hawaii State Federal Credit Union  
Hawaiian Airlines  
Ian MacNaughton  
Inatsuka Engineering  
Inspire Church  
Island Insurance Foundation  
James & Cheryl Canario  
James Palmer  
Jessica & Jeremy Munoz  
Jim & Norma Slavish  
Jody Allione  
Joe & JoAnn Zbin  
John Amrine  
John Endicott  
John & Laurel Henderson  
John Holeyfield  
John Smiley and Y. Hata & Co.  
Limited

Jordan & Ashley Romano  
Josephine Hoh  
Joshua S Dillon  
Joshua Strickler  
Kailua Assembly of God  
Kaleo Schneider  
Kamehameha Schools  
Karen Winslow  
Kathryn Barton  
Kehau Yoza  
Keith & Shannon Asato  
Kenneth Ball  
Kevin & Jennifer Weist  
Kim Aquino  
Kimberly Carson  
Knights of Columbus  
Ko Olina Resort Operations  
Kobayashi Group  
Lanai Resorts, LLC  
Landmark Builders  
Larry & Linda Munoz  
Leslie Oestmann  
Lima Kokua Inc.  
Lynn Babington  
Margaret & Joseph Munoz  
Mariah Brown  
Mark Peterman  
Matson Navigation Company  
Michelle & Mark Stofle  
Monte Schulz  
Myrna Lian & Richard Lee Cundy  
Fund  
National Christian Foundation  
Network for Good  
New Hope Central Oahu  
New Hope Kailua  
Nick Rolovich  
Noel Pietsch Shaw  
Pacific Creations Hawaii, Inc.  
Paul & Rose Mary Jackson  
Phillip & Janis Gerwien  
Plumbers and Fitters Union Local  
675  
Preferred Mechanical  
Prince of Peace Lutheran Church  
Rhonda Griswold  
Ronald & Sabrina Najarian  
Sacred Hearts Academy  
Sam Lee  
Sandro Tassan Bufola  
Sharin & Brad Burton  
Sherine Duncan  
Shontaz Naweli

Sierra Bible Church  
Skye Luque  
Soroptimist International of  
Honolulu  
Stacia & Jason MacMurray  
State of Hawaii Department of  
Human Services  
Stephanie Soll Buck  
Sterling Lee  
Sudhir & Karen Ispahani  
Sue Ferandin  
Susan & Stephen Metter  
Susan Onishi Andrade  
Sutter Health  
Tex & Sharon Bruffey  
The Bretzlaff Foundation  
The Cades Foundation  
The Lee and Bev Kunz Foundation  
The Lester & Bernice Smith  
Foundation  
The Shidler Family Foundation  
The Zissimos Family Trust  
Tim Ruppert  
Timothy M. Hogan  
Todd Bedford  
Turtle Bay Foundation  
University Health Alliance (UHA)  
Wahiawa Door of Faith Church  
Wendy Shewalter  
Wilson Homecare  
Winton Schoneman  
Woman's Board of Missions for the  
Pacific Islands  
Women's Fund of Hawaii  
Woodrow Chung

## \$500 - \$999

Aaron Alter  
Aaron Schnobrich  
Aime Nuar  
Air Conditioning Solutions Supply  
Corp.  
Amelia Andrade  
Annamarie Lerch  
Anthony Gregory, Jr.  
Barbara Lewman  
Beth Mckay  
Brent & Jill Cullinan  
Carolyn D. Hong  
Chad Bianchi  
Chad Koyanagi  
Chadwick Conway  
Christine Mayes

Christopher Chung  
Chuck Harris  
Daryl & Desiree Hee  
David & Sharon Fairbanks  
Dennis & Priscilla Ing  
Dennis Gibson  
DMG Corporation  
Dr. Ellen Southcott  
Dr. Matthew Aboudara  
Dr. Kathy Callahan  
Elizabeth Stamps  
Evie Carranza  
G. Donna Gedge  
Gareth & Jacklyn Munoz  
Genel Oganeku  
Hanna Andersson  
Harvey & Mary King  
Helen Higa  
Island Vintage Coffee  
Jared Kato  
Jess D'Elia  
Jim and Susan Utsugi  
John & Suellen Scott  
Jon Launer  
Jordan & Ashley Romano  
Ju Frigillana  
Judith Phillips  
Julia Matsuura  
Kathy Thurston  
Kimiko Yamamoto  
King & Neel, Inc.  
Lee Mar  
Leona Balthazar  
Leonard Rossoff & Eileen Hilton  
Linda Payes  
Linda Rodrigue  
Louis Johnson  
Michael Collat  
Monica Firestone  
Mutual Benefit Association of  
Hawaii c/o Royal State Insurance  
Nancy Grekin  
Nanette Sciuilli  
North Valley Community  
Foundation  
Pammella Laszlo  
Paraluman Stice-Durkin  
Rachel Chantavong  
Rainbow Watersports  
Rebekah Morimoto  
Rich McBride  
Richard Field  
Robert Clayton

Robert Ramsey  
Rudy Bitanga, Sr.  
Sato Delacruz  
Sherry Massey  
Simon Bitanga  
Sisters of St. Joseph of Carondelet  
Stephanie Thompson  
Steven Guyton  
Susan Lovell  
Teva & Nicoya Pou  
The Queens Health Systems  
Tina Berg  
Todd Pang  
Troy Miyasato  
Tushar Patel  
Two Seas Construction  
United Public Workers  
Valrie Griffith  
Wahiawa Assembly of God  
Warren & Shirley Higashi  
Wesley Uemoto  
Yvonne Jones

## \$499 - below

2014 Quest LLC  
A Place for Women in Waipio  
Aaron Lee  
Aaron McCandles  
Abifarin Scott  
Adrialrene Stefens  
Aetna Foundation, Inc.  
Aileen Kunewa  
Aimee Kartchner  
Akiiah Stewart  
Alan Hornstein  
Alexander Lau  
Ali Chisti  
Alicia Kuzma  
Alison & Bruce Maldonado  
Alison Tomisato  
Alyandina & Larry Bushe  
Alyssa Nonaka  
Alyssa Selby  
Amanda Price  
Amy McKenna  
Amy Usui  
Andrea Kanno  
Andrew & Denise Kolodny  
Andrew Gillespie  
Andrew Rosen  
Angel Garcia Calleja  
Angela Carter  
Angela Coleman

Angela Hong  
Angelica Kauhako  
Angelika Mielke  
Ann M Bauer  
Ann Marie Tuzzolino  
Anna Smith  
Anne Hyde  
Anne Komatsu  
Annemarie Rizzo  
Annemarie Sukhabut  
Annette & Stephen Gingerich  
Anthony Silva  
April Nishii  
Ashley Brodland  
Aubrey Bamdad  
Bailey Fine  
Barbara Ebersole  
Barbara Mcallaster  
Barbara Pratt  
Barbara Stehouwer  
Barbara VonSchmelting  
Barbi Shinn  
Beau Kassar  
Becky Akana  
Behman Zakeri  
Benjie Swenson  
Bessie Cranage  
Bettina Nemert  
Betty Fisher  
Beverly & Alan Schnobrich  
Blossom Chang  
Blossom Chang  
Boaz Naiman  
Bobbie Bailey  
Bobby Benson Center  
Bonnie Delgado  
Bonnie Fong  
Brad Carbine  
Bradford McKeown  
Brandon Luke  
Brandon Spalla  
Brian Murdock  
Brian Ryglowski  
Bridget Brewster  
Brigitte Egbert  
Bruce & Laura Fink  
Bryn Hauk  
Bryon Goo  
Bryon Hackett  
Byron Divins  
Caitlyn Taumuli  
Calvary Chapel Pearl Harbor  
Carl Vasquez  
Carla Pinales  
Carly & Kelika Rragagola  
Carol Riley  
Carole Jacobs

Casey Basalyga  
Cassandra Ware  
Catherine Krueger  
Catherine Mann  
Catherine Salvador  
Cathleen Leveque  
Cathleen Oyama  
Catholic Charities Hawaii  
Cathy Foy  
Cathy Fukunaga  
Cathy Joseph & Jackson Giannasio  
Chad Dudley  
Chad Hew-Len  
Chad Pollan  
Chanel Paresa  
Charlene Dave  
Charles & Sonmi Au  
Charles Hall  
Charles HewLen  
Charles Rowe  
Charles Woolwine  
Charlie Parker  
Charlotte Wiechmann  
Chasing Waterfalls LLC  
Chelo Garza-Maguire  
Cherise Kang  
Cheryl Woods  
Clara Sheffield  
Cliff & Nancy Halevi  
Clyde Kawahara  
Clyde Nakamura  
Coleman Glass  
Color Catering  
Concetta DiLeo  
Corey Campbell  
Corinne Brodie  
Cory Wong  
Cory-Alan Hinochi-Ishimine  
Craig Boult  
Cristin Ertel  
Cynde Pangas  
Cynthia Higgins  
Dale Muraoka  
Dallas Hutsell  
Damien Kealoha  
Dan Murai  
Dana Stark  
Daniel Carranza  
Daniel Chun  
Danielle DeSanctis  
Darcie Patlidzanov  
Darlene Popoalii  
Darren & Joy Imada  
Darren Ho  
Daryl Eby  
David & Carol Long  
David Hodges

David Parke  
David Rehm  
David Wheeler  
Dawn Bomer  
Dawn Tawata  
Dean & Naomi Masuno  
Deanna Franco  
Debbie Nhamad  
Debi Ortiz  
Deborah Nakashima  
Dee Lim  
Deena Tearney  
Deja Lunasco  
Delores Lim  
Dennis & Mary Fern  
Dennis & Monique Rice  
Derek Chang  
Derek Williams  
Desirea Hirani  
Devon James  
Diane Farkas  
Diane Hale  
Dianne Bowen-Coleman  
Dina Burkitbayeva  
Dolores Weidman  
Donald Rose  
Donna Kawano  
Douglas Philpotts  
Dr. Patti Isaacs  
Ed Kuoha  
Ed Soo  
Edna Esona  
Edralyn Caberto  
Edward J Mattes  
Edward Kakos  
Elaine Smith  
Elaine Tamashiro  
Elden K Kaeo  
Elisabeth Mather  
Elizabeth Ahana  
Elizabeth Hadley Porter  
Elizabeth Patton  
Ella Yumol  
Emily Blinkhorn  
Damien Kim Maldonado  
Emily Porter  
Emma Kerwin  
Erica Hashimoto  
Erica Scott  
Erika Kauffman  
Erin Young  
Esther Kai  
Evan Hirsch  
Farshad Talebi  
FEAST LLC  
Felicia Clarke  
Felicia Weinstein

Filipino United Church of Christ  
Fiona McDonough  
First United Methodist Church  
Francoise Trotman  
Franklin Yang  
Gabriel Gutierrez  
Gail K. Kam  
Gail Takamori  
Gary Grimmer  
Gary Oda  
Gary Thompson  
Gary Wat  
Georgetta Kelly  
Gerald & Cathy Shintaku  
Ginger Mallard  
Gino Paulino  
Glen & Diana Dattilo  
Glenn & Joyce Okino  
Glenn & Linda Woo  
Gregg Murphy  
Gregory Auberry  
Gregory Hazelton  
Gretchen Alther  
Harrilyn Kameenui  
Harrington Publishing  
Haven McKay  
Hawaiian Building Maintenance  
Healthy Earth LLC  
Heather Broderdorf  
Helena Anna Barahal  
Henry & Melanie Jacobsen  
Henry Kitagawa  
Howard Bishop  
Howard Lee  
Irene & Gregory Burgess  
Irene Guerrero  
Irobela Wreagh  
Island Heritage Realty Inc  
Jackie Tomiyoshi  
Jack & Ellisteen Smith  
Jackie Davison  
Jacquelyn Manaole  
Jalene Hitzeman  
James & Jean Bergstrom  
James Davis  
James Elsea  
James Haid  
James Yatsushiro  
Jameson Loriosa  
Jamie Sheppard  
Jamie Heitzinger  
Jamie Hung  
Jan Christensen  
Jane Jamison  
Janet Cooke  
Jasmine Baker  
Jasmine Ong

Jeannine Souki  
Jeff Miller  
Jeffrey & Stephanie Furuta  
Jeffrey Bienhaus  
Jeffrey Paresa  
Jenna Clarke  
Jennifer Cornwell  
Jennifer Eng  
Jennifer Li  
Jennifer Menor  
Jennifer Rosman  
Jessicajoy Zarrliello  
Jessie Dunn  
Jisook Choi  
Joan Pratt  
JoAnn Kam  
John & Milaina Felis  
John Flanagan  
John Matias  
John Smiley  
John Snyder  
Joseph & Mele Spencer  
Joseph Albinio  
Joseph Gutierrez  
Jovanna Giannasio-Fern  
Joy Minaai  
Joy Within Photos c/o Yamaguchi Family  
Joyce Lee  
Jranane Mundine  
Juanne Quidang  
Julie Harding  
Judelie Harding  
Judith Guardino  
Judy Murata  
Judy Reeves  
Jules Sukhabut  
Julia Fink  
Julia Sanderson  
Julie Harding  
Julie Hong  
Julie Ounanian  
June Fernandez  
June Rains  
Justin Fajota  
Justina Murphy  
Ka'iulani & Matt Sodaro  
Kaina Santos  
Kam Napier  
Kanani Guerland  
Karen Dillon  
Karen Lindsay  
Karen Tan  
Karen Watanabe  
Karin Martin  
Karl Schneider  
Kate Butts

Katelyn Broderick  
Katherine Kramer  
Katherine Ray  
Kathryn Inouye  
Kathy Fay  
Katrina Dangleman  
Kavin & Genevieve Denning  
Keahi & Lynda Pelayo  
Kelly Kitashima  
Kelly McDonald  
Kelsey Merry  
Kenji & Jennifer Price  
Kenneth & Ramona Wong  
Kenneth Sakihama  
Kerry Kopp  
Kevin Rathbun  
Kevin Takata  
Kevin Tsutomi  
Kevin Williams  
Kimberly Kilmer  
Kimberly Makaneole  
Kinko Hamilton  
Kirby Park  
Kirsten Kellett  
Kokua In Kind LLC  
Krisandra Smith  
Krista Walker  
Kristen Collat  
Kristin Wood  
Kristine Giannasio  
Krystal Cope  
Kurt Jenisio  
Kylie & Or Gumban  
Kymerly Marcos Pine  
Lamar Orndorff  
Lance Kakimoto  
Laura & Steve Temkin  
Laura Christine Anderson Mansfield  
Laura Esslinger  
Laura Guinn Hall  
Lauren Curtis  
Lauren Okinishi  
Laurice Otsuka  
Lei Fountain  
Lei Palm  
Leigh Sandifer  
Leila Zarrliello  
Leilani Johnson  
Leilani Kahoano  
Leo & Reggie Castillo  
Leslie Kobayashi  
Leslie Malalais  
Licia Hill  
Liliana Vasquez  
Lily Coletta  
Linda Avegalio  
Linda Fulton

Linda Lee  
Linda Miller  
Linda Pitman  
Lisa Eveleth  
Lisa Santroch  
Lloyd Jakeman  
Lori Abe  
Lori Angstadt  
Lori Komer  
Lori Lum  
Lorin Sisco  
Louise Ing  
Lucy Burns  
Luxury Hospitality Representation  
Lynn Spitzer  
Makenzie Jensen  
Marc Fleming  
Marc Waddle  
Margaret Hession  
Maria Verheyen  
Maria Zavala  
Marisa Nguyen  
Marissa Gordon  
Mark & Barbara Norfleet  
Mark Benson  
Mark Merriam  
Martha Weinstock  
Mary Arakaki  
Mary Charles  
Mary Edington  
Mary Kim-Johnson  
Mary Rose Cacchione  
Matt & Yuka Uchida  
Matthew Palafox  
Matthew Tio  
Matthew Wells  
Maureen Ballard  
Maurine King  
Mea Aloha Spady  
Melina Manchester  
Melinda Walker  
Melissa Brice  
Melissa Matsuura  
Melissa Monreal  
Melissa Rueschhoff  
Mercedes Castillo  
Michael & Arlynn Livingston  
Michael Camp  
Michael Ostrowski  
Michaela Cook  
Michelle Fernandez  
Michelle Lyon  
Michelle Parish Carvajal  
Mike & Kim Perkins  
Mike Aranda  
Miki Liu  
Milagros Martinez

Misty Browning  
Mitchell Azouz  
Mitchell Yamada  
Monica Montgomery  
Muriel Ikeda  
Nami Eden  
Nancy Neary  
Natasha Sawney  
Nathan Reed  
Nathaniel Higa  
Neil & Lora Nakai  
Neil Bowie  
Nick Andreottola  
Nicole Brodie  
Nicole Matsuo  
Nicole Mowat  
Nicole Noonan  
Nikolas Boskovich  
Noel Trim  
Nolan Zane  
Noreen Matsuda  
Norman & Mary Ann Frank  
Norman & Rosalind Luther  
P Harani  
Pam Chun  
Pamela Moore  
Patricia Hamren  
Patrick Matthews  
Paul Grable  
Paul Hoe  
Paypal Charitable Giving Fund  
Pearl Harbor Christian Academy  
Pearl Harbor Sub Spouses Charity  
Association  
Peter & Luann Sackrider  
Peter Wetzels  
Priscilla Contreras  
Project Yaytimes  
Pua'Ena Burgess  
Puamana Park  
Rachel Ostergaard  
Raiza Garcia  
Rami George  
Randal Gerell  
Randy Adams  
Randy Soriano  
Randy Soriano  
Raoul Magana  
Ray Arney  
Rayson Naganuma  
Rebekah Graham  
Rebekah Kekuna  
Red Bamboo  
Rena Kawakami  
Rena Tomlinson  
Renee Bourbonniere  
Renee Kam

Renee Perrington  
Renee Silva  
Rhodora Aquino  
Richard & Kathleen English  
Richard Cohn  
Rick Altizer  
Robert & Monique Canonico  
Robert Currie  
Robert Trim  
Romney Bitanga  
Ron Nagasawa  
Ronald & Paula Todd  
Ronald Kozan  
Rosalyng Cheng  
Rose Chu  
Rosemarie Albano  
Rotary Club of Lahaina Sunrise  
Roxanne Rimonte  
Russell Adams  
Russell Kuruma  
Ruth Marie Quirk  
Ryan Hillner  
Ryan Kawamoto  
Ryan Teramoto  
Samlynn Moore  
Sandra Zinnato  
Santiago Janier  
Sarah Bean  
Savan Patel  
Saxon Knauss  
Scoop of Paradise  
Scott & Dr. Joda Derrickson  
Scott Jacob  
Scott Kurosawa  
Sean Oliver  
Shandra Carter  
Shanell Young  
Shannon Munoz  
Sharon Pena  
Shawna Biemann  
Shemaiah Quarles  
Shirley Koga  
Siggi Bjarnason  
Simone Shaw  
Sophia Lobley  
Sophie Nakamura  
Stanley Cabanas Jr.  
Stephanie Batzer  
Steve Suzuki  
Steven Esona  
Steven Sullivan  
Still & Moving Center  
Stuart Lee  
Susan & Peter Shaindlin  
Susan & Richard Foad  
Susan Lyle  
Susan Rhee

Susan Stander  
Susan Szabo  
Susan Wadas  
Suzanne Sullivan  
Sybil Hamada  
Tamara Bitanga  
Tamara Derosa  
Tanya Johnson  
Taryn Bond  
Taylor Kaaina  
Tehani Fearon  
Terry Wong  
Theodore Peck  
Theresa Kari  
Thomas & Jill Beaupre  
Thomas Reilly  
Thomas Spheeris  
Tiare Lando  
Timothy Mccandless  
Todd & Ruth Bessinger  
Todd Devere  
Tom & Linda Diersbock  
Toni White  
Tori Carapelho  
Toshia Hogan  
Tracy Higashi  
Tricia Mooney  
United Way of Central Indiana  
United Way of Greater Atlanta  
United Way of the Bay Area  
Valerie Maluyo  
Vanell Naum  
Veronica Hee  
Veronica Suozzi  
Vicky Pacione  
Vincent Ruiz  
Vipin Deshbhratar  
Wahiawa United Methodist Church  
Waialae Country Club  
Wayne Bren  
Whitney Schneider Furuya  
William Ditto  
William Lum  
William Yeh  
WM Owen & Maile Williams  
Xavier Espinoza  
Ying Chi  
YourCause, LLC Trustee for Federal  
Home Loan Mortgage Corporation c/o  
Marvelous Spraggins  
Zakary Noyle





## BOARD OF DIRECTORS



### OFFICERS

**Martha Smith** (Chair)  
**Jessica Munoz** (President)  
**Patrick Boyce** (Treasurer)  
**Susan Utsugi** (Secretary)

**Aaron Schnobrich**

**Bill Placke**

**Carol Taira\*\***

**Chuck Harris\*\***

**Jeremy Munoz**

**Kaleo Schneider**

**Kanakolu Noa**

**Lani Ka'a'a\***

**Laura Esslinger**

**Leilani Kahoano**

**Mark Davis\***

**Mark Peterman\*\***

**Melissa Rueschhoff**

**Michelle Stofle**

**Scott Inatsuka**

**Sterling Lee**

**T. Michael Hogan, Jr.**

\*Joined in 2019

\*\*2018 Officer



## BOARD OF ADVISORS

**Amber Davies, LCSW** Director of Clinical Programs at Saving Innocence Project, California

**Anna Grune** Architect, Assoc. AIA at Dean Sakamoto Architects LLC

**Bobby Lou Schneider Yeackel** Co-Owner, Buzz's Original Steakhouse

**Brian Pace** Therapist, Educator, Coach, Residential Treatment Care Expert/Consultant

**David Hipp** Special Projects Manager, Lili'uokalani Trust

**Elizabeth Kent, JD** Lecturer, William S. Richardson School of Law, University of Hawai'i

**Erika Kauffman** Founder & Principal Strategist, EPR Public Relations Consultancy

**Esther R. Brown, M.A Psychology** Founder, The Embracing Project, Las Vegas

**Franki Reddick-Gibson, Psy.D.** Chief Clinical Officer, Mingus Mountain Academy, Arizona

**Harry A. Saunders** President, Castle & Cooke Homes, Hawai'i

**Katharine P. Lloyd, J.D.** Senior Vice President & General Council, Hawai'i Community Foundation Deputy General Counsel

**Judge Leslie Kobayashi** federal judge for the United States District Court for the District of Hawai'i

**Mariah Brown** Business Owner DaKitchen, Entrepreneur

**Mike Lyons** Retired Honolulu Police Officer, North Shore Neighborhood Board Council Member

**Dr. Robert Pantell, MD** Medical Director, Kapi'olani Child Protection Center

**Sarah Teske** Lead Associate, Booz Allen Hamilton

**Shandra Carter, LCSW** Executive Deputy Director, Texas Juvenile Justice Department. (Therapist and Residential Treatment Expert)

***Mahalo to our staff and consultants who have helped to fulfill our mission.***



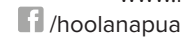
**PROUDLY PARTNERED WITH:**



Ho'ōla Nā Pua is a Hawai'i-based,  
501(c)3 non-profit organization.

P.O. Box 22551 Honolulu, HI 96823 • 808.445.3131

[www.hoolanapua.org](http://www.hoolanapua.org)



/hoolanapua @hoolanapua